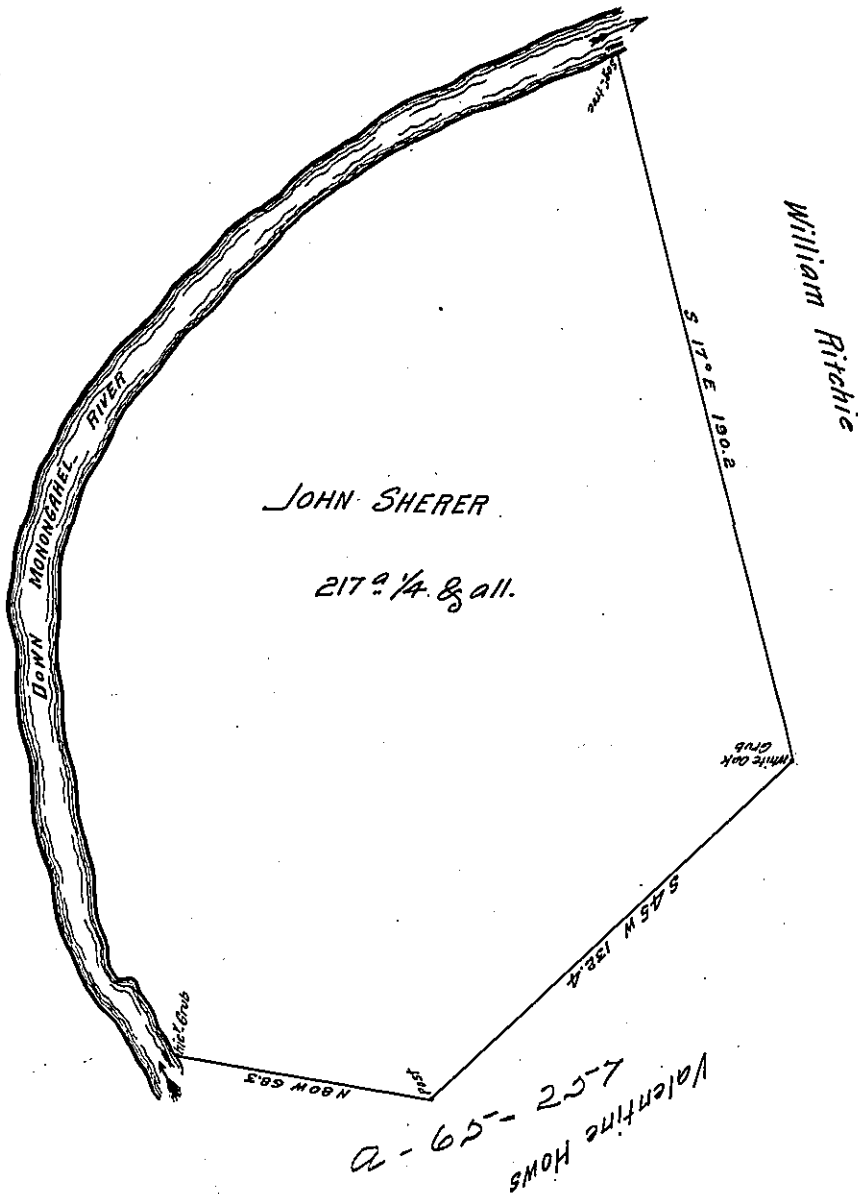


River Courses from A to B

N 32 W	23.2
West	5.3
N 19 W	27.0
N 13 W	25.0
N 6 W	31.0
N 2 W	33.0
N 23 E	32.0
N 34 E	28.0
N 44 E	49.0
N 57 E	60.0
N 69 E	32.0 per.
	<u>345.5</u>



Returned pt William Sherer 4th January 1797 fees paid pt him L 1-17-6

Situate on the East side of Monongahela River in Rostraver Township Westmoreland County & was formerly Surveyed and Returned to Peter Resner by order of Survey N: 3094 dated 17th April 1769 ~ And is now Returned to John Sherer by virtue of an order of Survey N: 320 dated the 3^d day of April 1769 pursuant to a decree of the Honorable Board of property dated the 26th day of February 1770 entered in Minute Book of Property page 208 ~ Certified so to be by the Secretary of the Land Office the 16th day of December 1796 ~ And to me directed by the Surveyor General the 17th day of December 1796 ~

Alexander McClean Deputy

Daniel Brodhead Esquire
Surveyor General

I Alexander McClean Deputy Surveyor & do certify that the above is an Exemplification of a Record made in my Office the 4th day of January 1797 ~ in Book E page 190

In Testimony whereof I have Set my hand the 20th day of February 1797 ~ ~ ~ ~ ~

Alexander McClean Deputy

IN TESTIMONY that the above is a copy of the original remaining on file in the Department of Internal Affairs of Pennsylvania, made conformably to an Act of Assembly approved the 16th day of February, 1833, I have hereunto set my Hand and caused the Seal of said Department to be affixed at Harrisburg, this

eighteenth day of June 1907

Henry Houck
Secretary of Internal Affairs